

TOMMY WHITTLE STAND

WHITTLES SUITE

The Whittles suite can comfortably accommodate up to 100 delegates, and with its positioning on the first floor Tommy Whittle Stand, gives guests an enviable view of the entire racecourse. The room is an ideal space for seminars, presentations and small wedding receptions.



THEATRE

100



BOARDROOM

30



CABARET

60



EXHIBITION

60



DINNER

120



DINNER DANCE

100



U SHAPE

-



RECEPTION

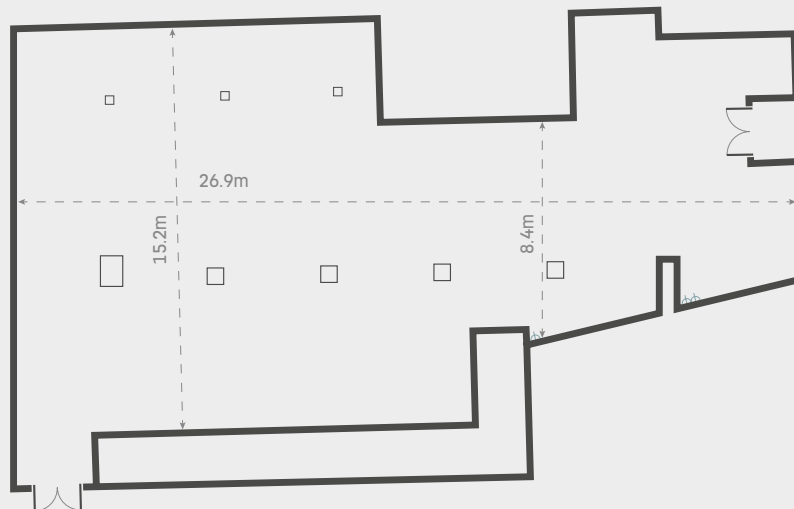
100



13A SOCKET

-- USEABLE SPACE DIMENTIONS

FLOOR PLAN



CONTACT US ON: 01942 402623 | NORTHWESTEVENTS@THEJOCKEYCLUB.CO.UK